



V&O brings together artist Pandora Vaughan and architect Huw Meredydd Owen. They have collaborated on a wide variety of projects over the last twelve years, and do this to combine their interest in seeing the significance of places, whether made, amended or found. The ways in which people interact with place and how to make beneficial shifts or draw attention to use, habit and want, forms the core of their work together.

Maindee Triangle

this document has an initial statement and some relevant images of the use art in architecture, and of some of the projects that V&O have worked on mentioned in the documentation

more images can be found from the individual pages on the website

www.huwmeredyddowen.com/#!np19/ch65

Maindee Triangle Project

This statement is made in support of the pre-qualification questionnaire prior to the appointment of a 'Technical Design Lead' and should be read in parallel with it.

V&O brings together artist Pandora Vaughan and architect Huw Meredydd Owen. They have collaborated on a wide variety of projects over the last twelve years, and do this to combine their interest in seeing the significance of places, whether made, amended or found. The ways in which people interact with place and how to make beneficial shifts or draw attention to use, habit and want, forms the core of their work together.

They choose the approach and media which seems most appropriate to a projects' circumstances, ranging from research to making or talking workshops to art commissions to architectural commissions ... and many combinations thereof.

In Maindee, the regeneration of an area is to be achieved by increasing the awareness of the inhabitants of its potential, of facilitating the greater use of spaces in the vicinity, and as a consequence of increasing community confidence. It has been brought about by the funding provided by the Arts Ideas Places programme of the Arts Council, and is what draws us to the project. Art is a pervasive process, here, which we wish to extrapolate from existing creative activities including the Carnival.

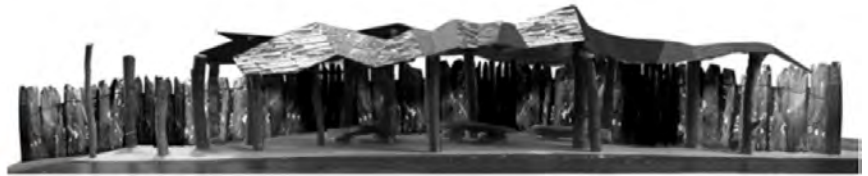
Early participative action is seen as an essential step in developing the awareness; the art lies in the action, and we intend to provide a 'place for action' at the heart of the community. Attached is a copy of the original paper produced in 2014 that raises some questions, and suggests some directions of travel, which we would adapt to the situation as it has developed and largely sets out how we view the commission.

The brief asks for a 'technical lead', and the union of an arts approach and the benefit of 30 years of practice should provide the key skills required to fulfil it, but we also see the need of 'feet on the ground' for which we have sought the ready co-operation of Mike Greenwood, architect, of CDT, who is based in Maindee, together with former colleagues Henrietta Lucas and Tom Bramley, landscape architects. The extent of duties to be provided will depend on the funding and on the direction of development, but the balance is between a holistic creative process and the ability to deliver the solution in a cost effective manner - this will no doubt be the subject of the agreement made prior to appointment.

There is an option in the PQQ to include a business advisor, and in the interests of making a single cohesive team with good intercommunication, we suggest the inclusion of Jan Walsh of Cotyledon. Mike, Henri and Jan have worked together previously and this is also a benefit to the team.

Huw Meredydd Owen: a selection of projects

working with Pandora Vaughan as V&O



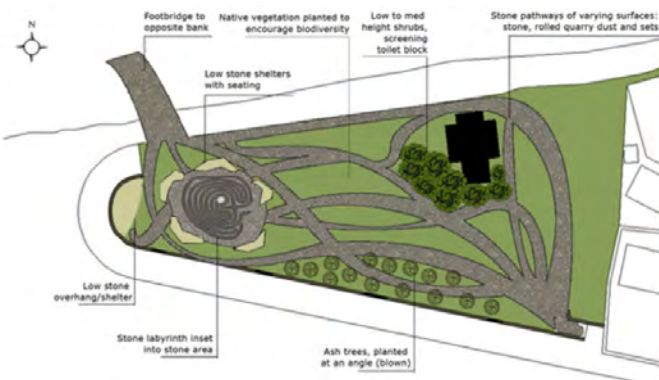
Sherpa, Snowdon 2003 - 2004

for the Snowdonia Green Key Initiative; design of a series of timber and copper-roofed site-specific bus shelters in and around Snowdonia National Park. *Unbuilt.*



Museum of the Seaside, Rhyl 2004

Dramatic reinvention of a poor commercial building to provide visitors with a layered experience of Rhyl in its heyday, and also a fully accredited museum for the collection and touring exhibitions. *Unbuilt.*



Queens, Aberdaron 2005

Public consultation and placemaking design for coastal defence land into new landscape and facilities. *Unbuilt.*



Llwybr Iauws, Cwellyn, Snowdon 2005 - 2007

for Snowdonia National Park Authority. Commissioned to create a boardwalk route with disabled access as a sculptural landscape work with false perspective jetty, installations and multiple-choice portals.



Cywain, Bala 2000 - 2009

for Antur Penllyn. Landscape design, exhibition design, signage, and artworks (for HMO designed scheme following feasibility and project development)



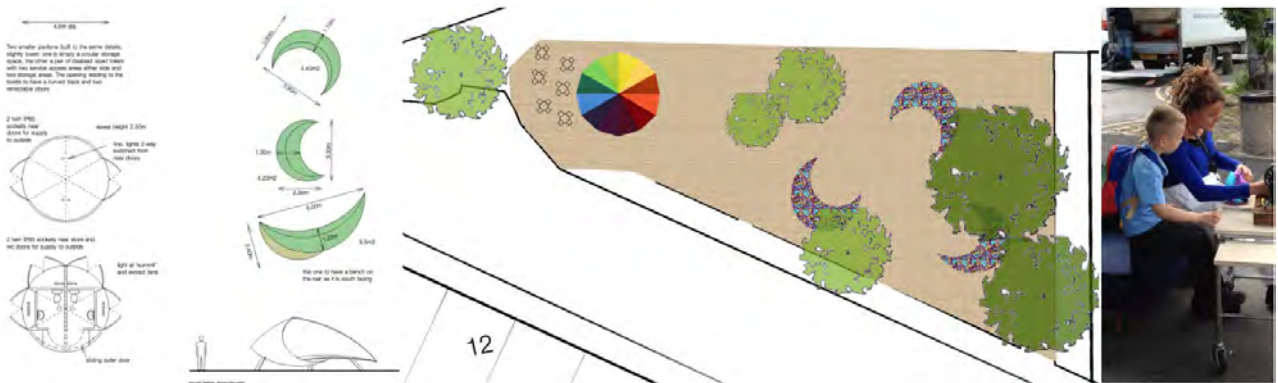
TBOWS, Bournemouth 2010

design and construction of a flexible outdoor learning, social and performance environment in the school. Part of the ACE Creative Partnerships scheme.



Porth y Swnt, Aberdaron 2011 - 2014

Interpretive experience for a new National Trust visitor centre, working with the community, and a number of artists. Individual works also produced by V&O.



Maindee, Newport 2014 - current

Using art activities and interventions as a catalyst for regeneration, as part of ACW 'Ideas People Places' programme.

Huw Meredydd Owen: a selection of projects

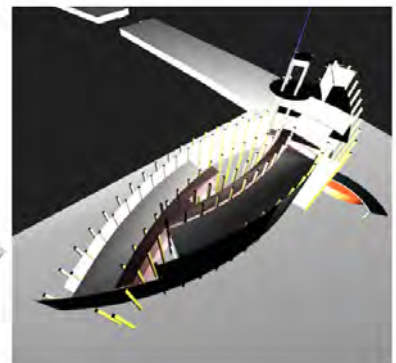
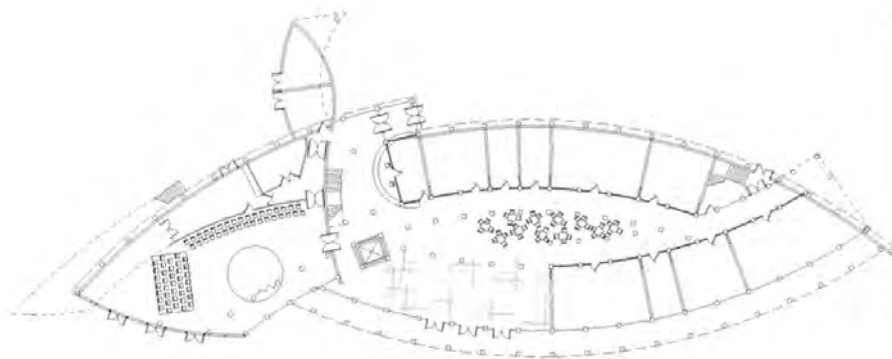
art and place

Carreg ar Garreg, Cross Hands 1997

Organiser (joint) and contributor: art and architecture charette in revitalising village of Cross Hands, focussing on a large redundant caravan factory site and effects of recently constructed by-pass.

Creu Lle, Caernarfon 1998

Day workshop exploring - with artists - the regeneration of the Maes in Caernarfon, in front of its well known castle; organiser (joint) animateur and contributor.



Doc Fictoria, Caernarfon 1997 - 2001

Design feasibility for arts and multimedia centre located in the context of Caernarfon Castle and Town Walls: a fluidly flexible space intended for a cross-over between specialities and the population at large, aiming to avoid becoming an 'arts centre'; revised scheme became Galeri.



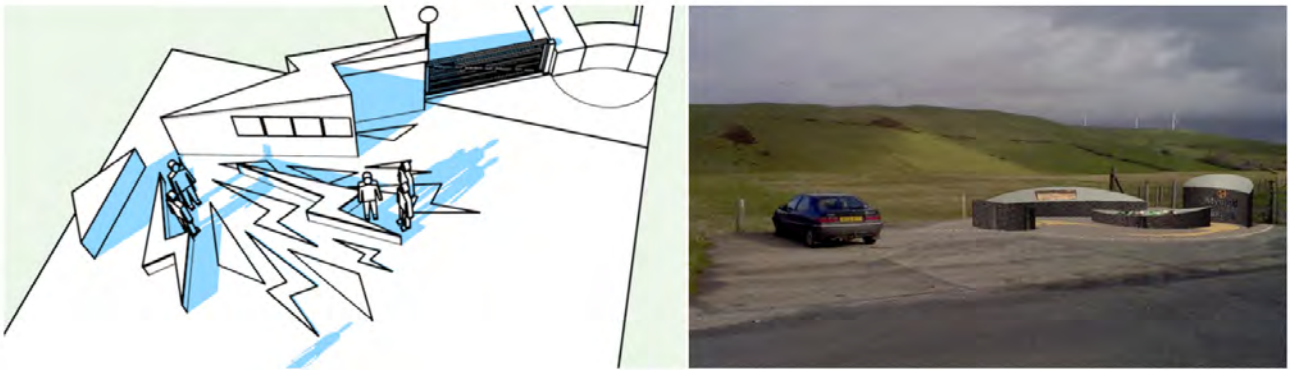
Tyddyn Môn, Amlwch 1999- 2002

Development of farm as an improved destination culminating in a network of paths and a series of arts commissions in two phases; farm operated by adults with learning disabilities



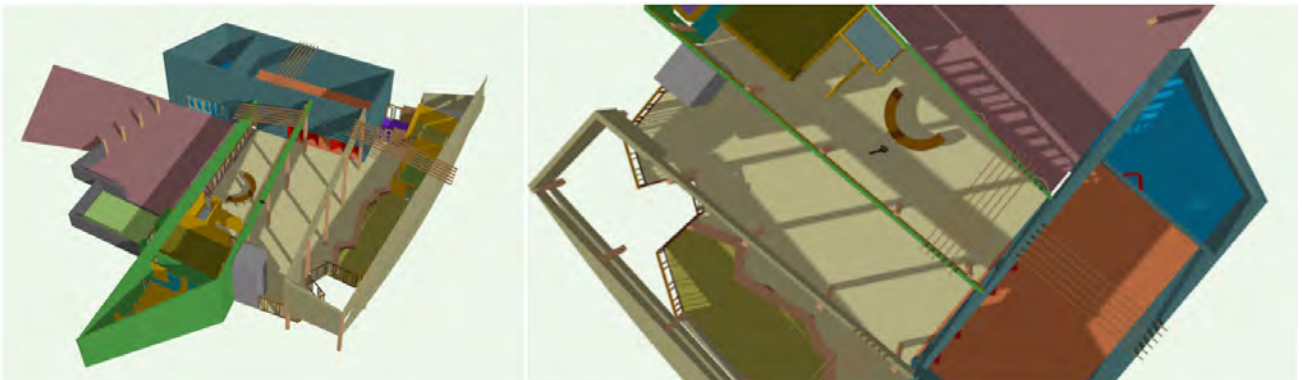
Dwylo Da, Penygroes 2002

Comissioning of a mural (by a young Bedwyr Williams) as part of a placemaking process for new childcare facility (by Huw).



Mynydd Gorddu, Aberystwyth 2003

information point for a wind farm in north Cardiganshire drawing attention to the benefits of clean and sustainable energy



Rural Development Centre, Llanrwst 2002 - 2003

Study to provide rural Conwy, centred on Llanrwst, with a centre for education, community development, entertainment and confidence building, complementing the existing facilities, and making a fluid space for crossover interaction between user groups.



Bethania, Nant Gwynant 2004

Culmination of the feasibility and development of a recently closed chapel, re-purposed as a community cafe, by the commissioning of artist designed elements facing the road, increasing its interest and the number of visitors from the start of the nearby Watking Path to Snowdon.



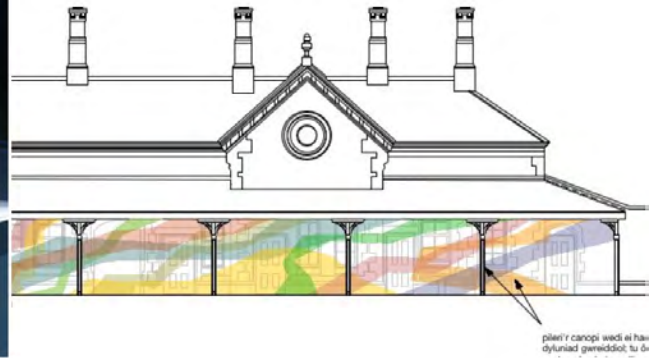
Denbigh County Hall 2005

Feasibility of making the old county hall and courts building into a certified museum by making the building its main artefacts, transforming the nature of the 'place' from what had become a 1980s megastructure internally.



Canolfan y Frenni, Crymych 2009

Exploring ways of making a sizeable market hall in the centre of this agricultural village into an improved community asset, as well as representing the community's aspirations, including cultural events and as a destination.



Llanrwst Station 2010 - 2015

Using the intrinsic significance of an old station (new journeys; new beginnings; connection with the wider world) to develop a location for economic and educational activities for young people in the area, particularly in Welsh.



Coliseum, Porthmadog 2012 - 2013

Part of team helping to give a recently closed cinema the potential of an extended life using community resources and looking at the building as a stimulus for community confidence



Old Lime Kiln Site, Abersoch 2013-2014

Interpretation point for the coastal trade, making the location a feature of the presentation due to its links with the ships that would load and offload on the nearby beach



Carmel, Anelog 2014 - current

Refurbishment of a historic chapel, needing to emphasise its relationship to the community and to become a destination in its own right, to be achieved by large scale artwork.